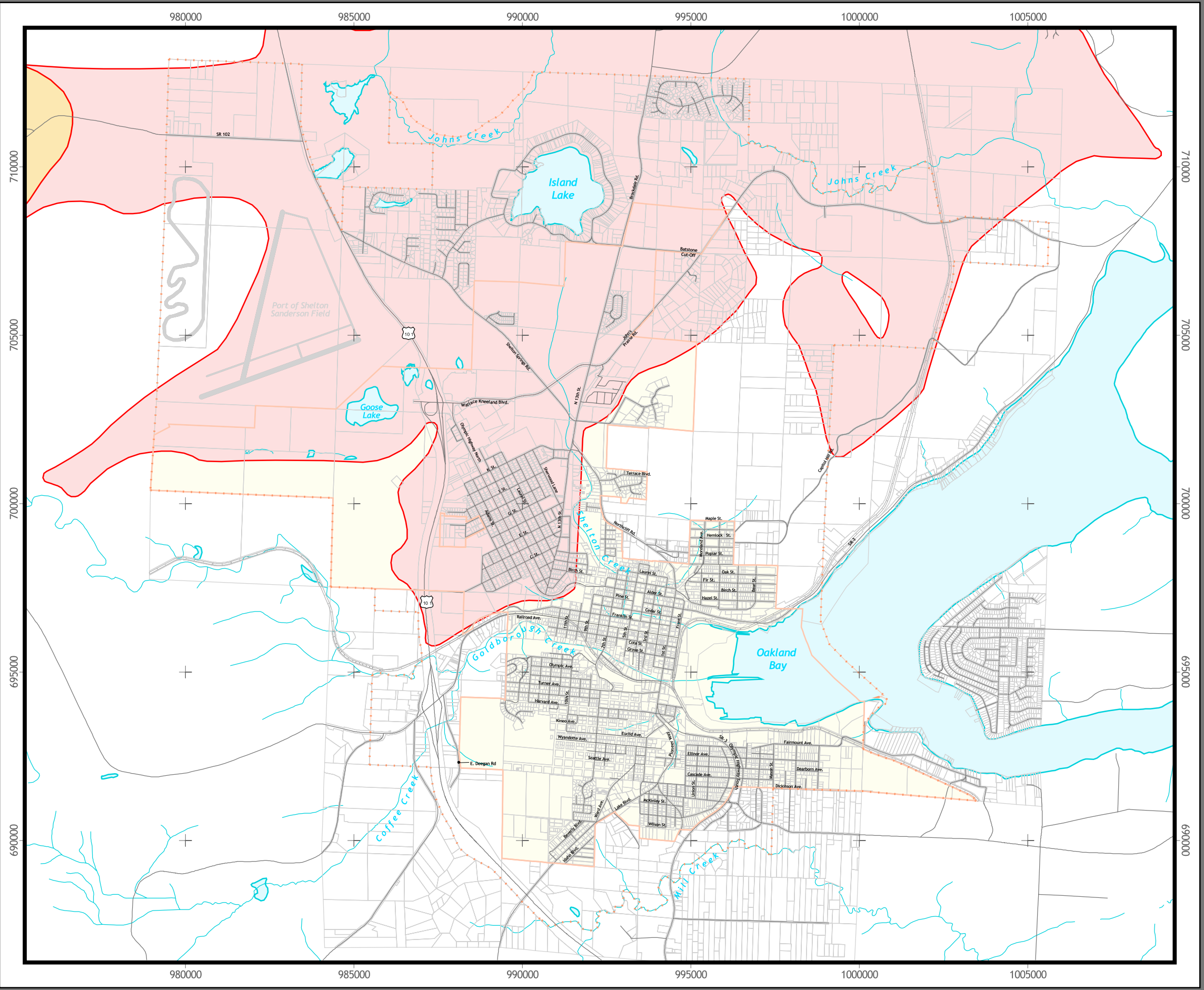


02437.02 H:\PROJECTS\City\_of\_Shelton\APR\Files\Critical\_Areas\_Ordinance (03-16-2004)



**Legend**

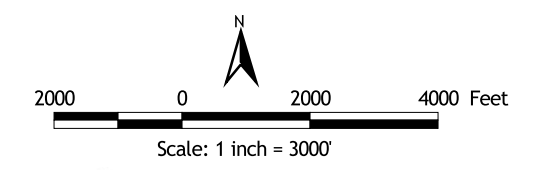
- Critical Aquifer Recharge Areas**
- Class I - Extremely Critical
  - Class II - Highly Critical
  - Class III - Moderately Critical  
(Note: No areas currently mapped)
- Roads
  - Streams
  - Parcels
  - Urban Growth Boundary
  - City of Shelton Limits

**Description of Map:**  
 Critical Aquifer Recharge Areas include those areas that are determined to have an important recharging effect on aquifers used as a source for potable water and vulnerable to contamination from recharge.

Title 21.66.040 defines Critical Aquifer Recharge Areas as classified as either Class I (extremely vulnerable), Class II (highly vulnerable), or Class III (moderately vulnerable), as shown in the adopted map.  
 The map was developed from several sources by a qualified geologist.

**Source of Data:**  
 Aquifer Recharge Areas Map, City of Shelton, January 2004

**Disclaimer:**  
 This information is provided as a public service, and a guide to property owners, potential applicants, and the general public. Additional research and documentation may be required to determine the location and extent of environmentally sensitive areas.  
 No warranty is provided as to the accuracy of the information provided, and the user of this information assumes all risk associated with its use and dissemination.



**Jones & Stokes**

# Figure 6 Critical Areas Potential Critical Aquifer Recharge Areas

City of Shelton  
 Comprehensive Plan Update  
 March 2004