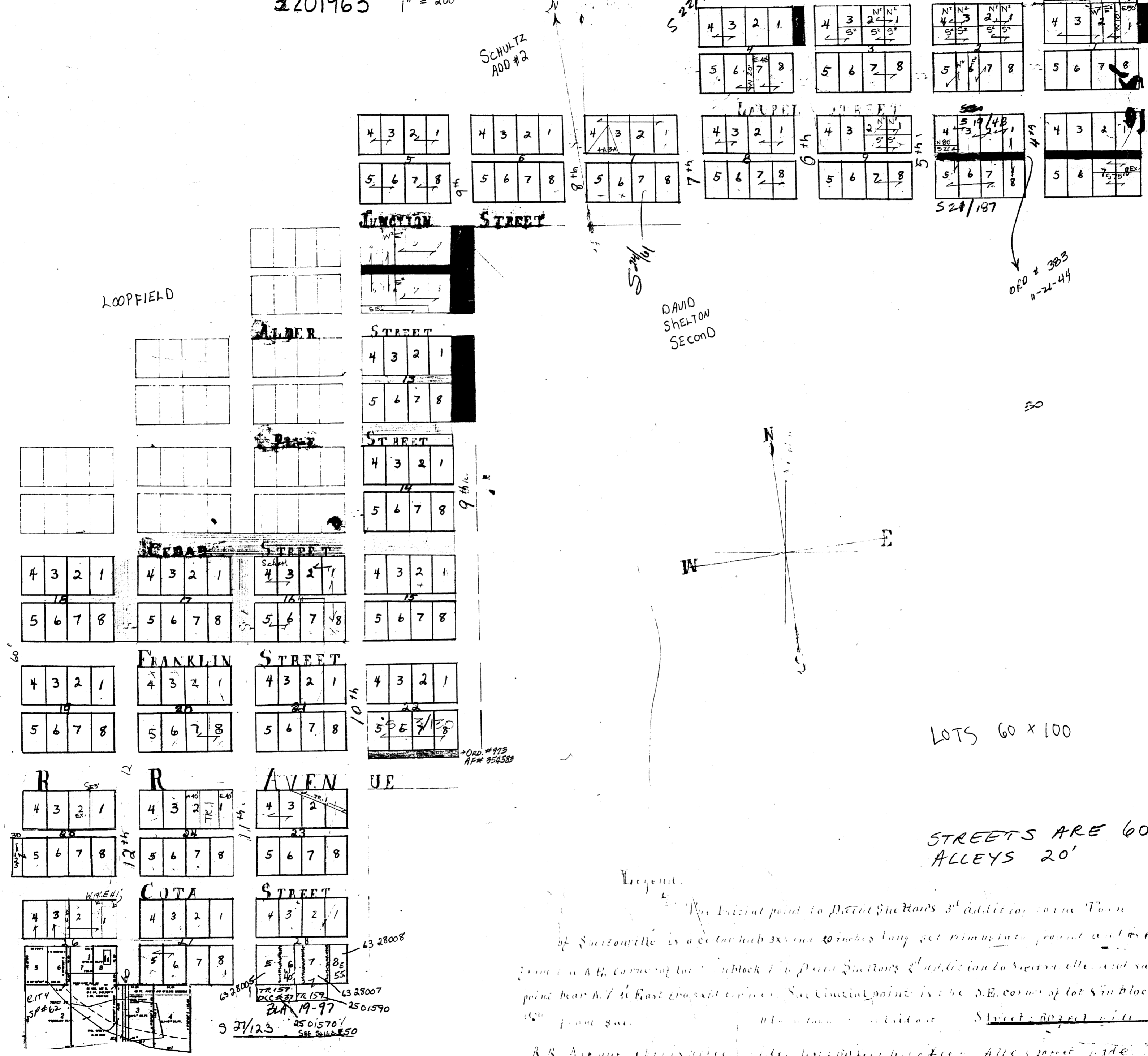


DAVID SHELTON'S 3rd ADDITION TO SHELTON-VILLE

3201963 1" = 200'

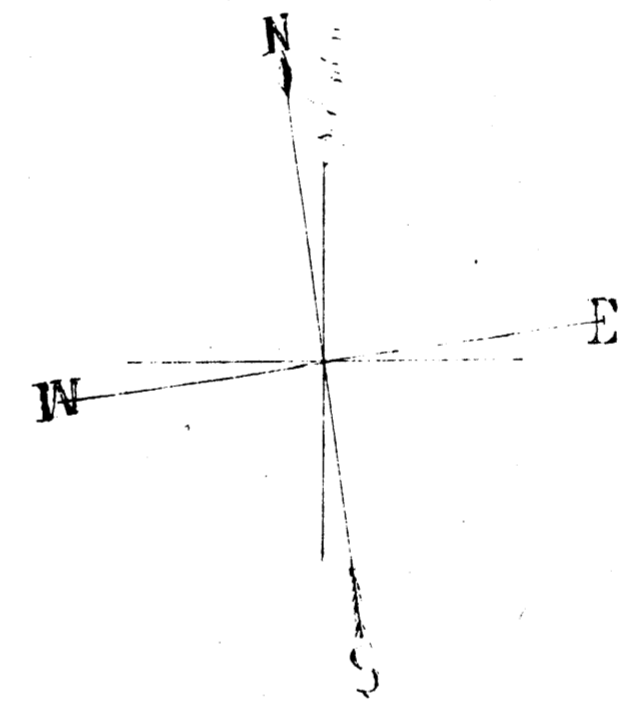


LOT 6
BLK 1
REEDS ADD
G.L. 1

No 1

DAVID
SHELTON
SECOND

ORD # 383
11-21-44



LOTS 60 x 100

STREETS ARE 60'
ALLEYS 20'

Legend.

The initial point to David Shelton's 3rd addition to the Town of Sheltonville is a certain 33 x 100 inch long set boundary point and is a corner of lot 1 in block 1 of David Shelton's 2nd addition to Sheltonville and said initial point bears N 73° 30' East 230.0 feet from the S.E. corner of lot 5 in block No. 11 of said addition.

The initial point to David Shelton's 3rd addition to the Town of Sheltonville is a certain 33 x 100 inch long set boundary point and is a corner of lot 1 in block 1 of David Shelton's 2nd addition to Sheltonville and said initial point bears N 73° 30' East 230.0 feet from the S.E. corner of lot 5 in block No. 11 of said addition.

Street 60 feet wide

Alley 20 feet wide

See also plat 3201963

DAVID SHELTON'S
DLC # 37

ORD # 473
AP # 354523

ORD # 383
11-21-44

3201963

3201570
SEE SUB # 50

3201590

3201590

3201590