

David Shelton's 1st Addition to Sheltonville

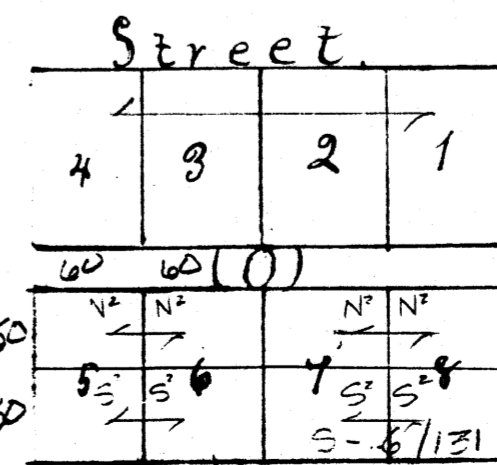
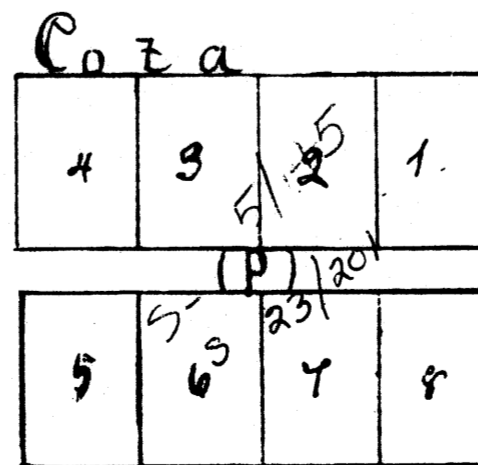
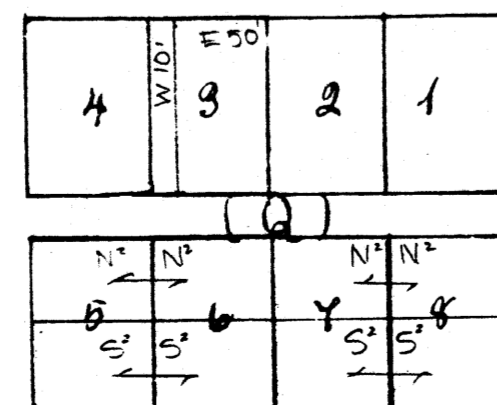
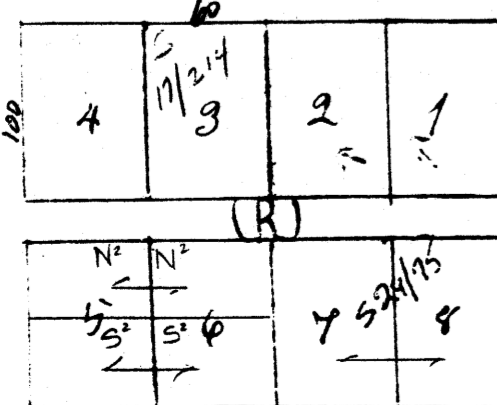
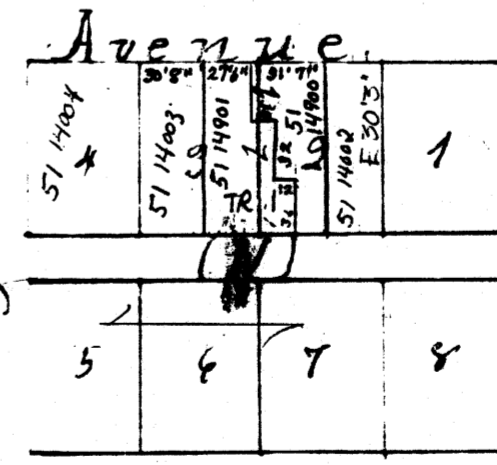
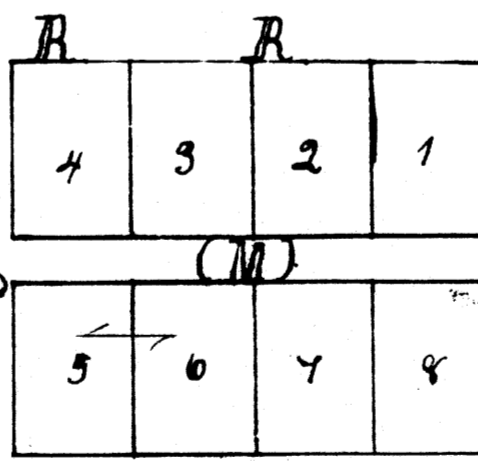
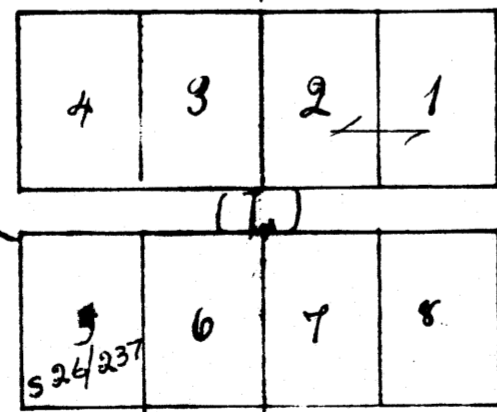
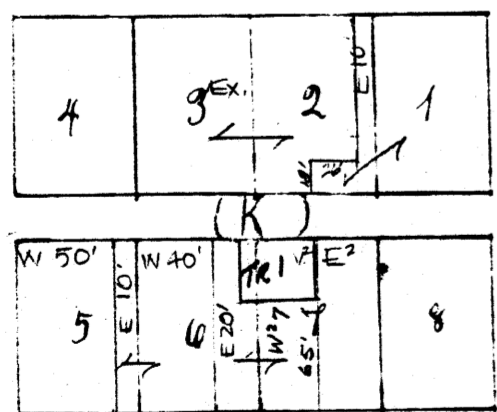
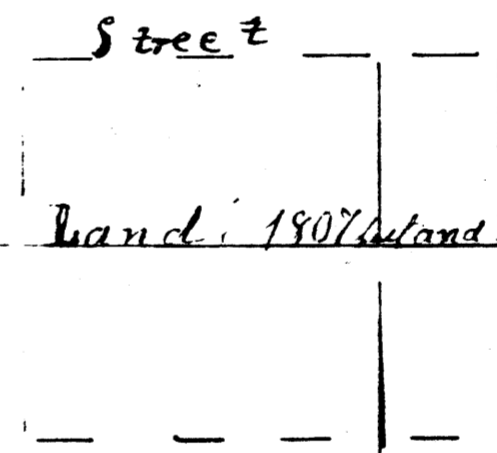
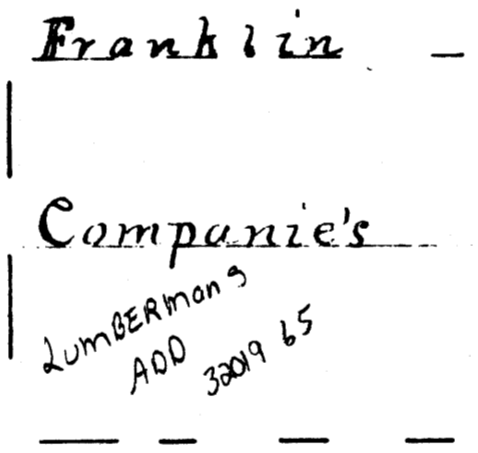
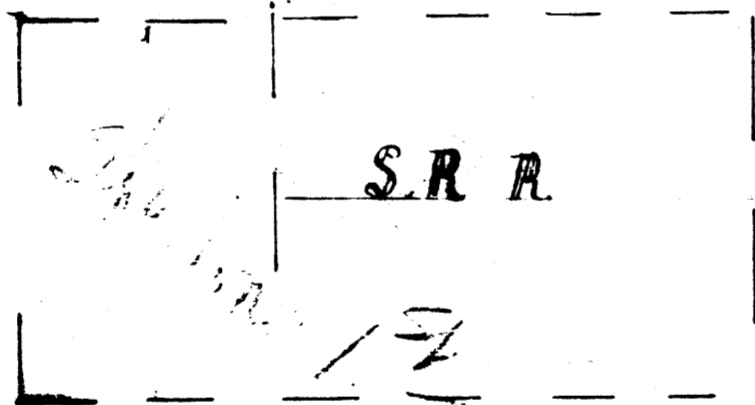
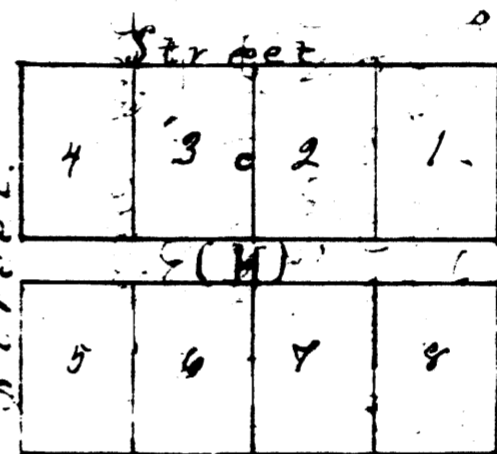
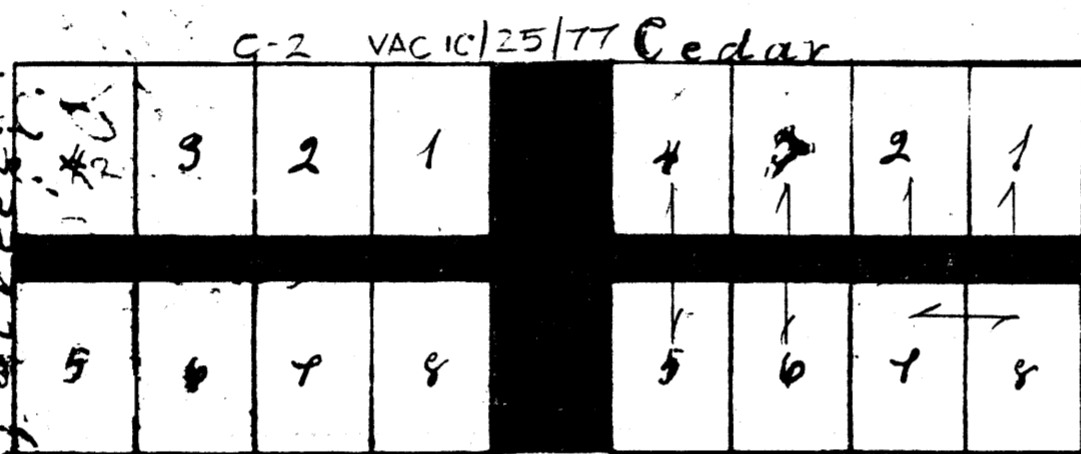
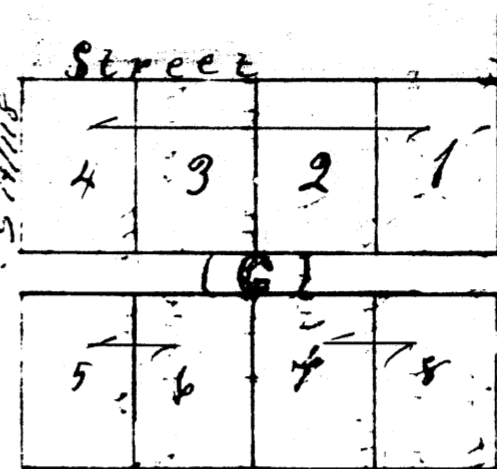
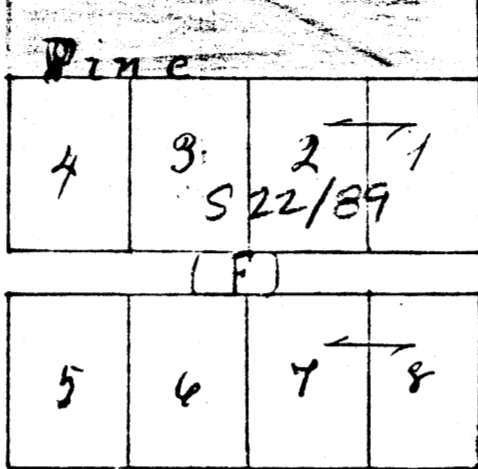
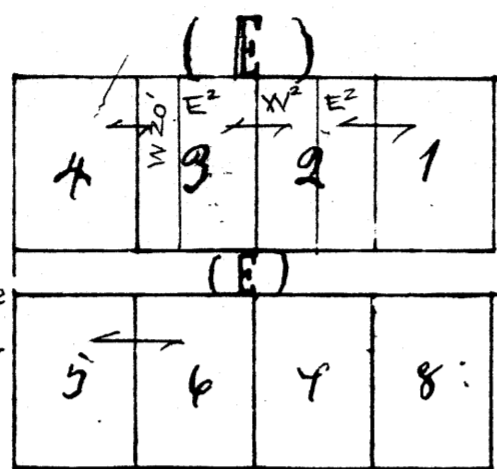
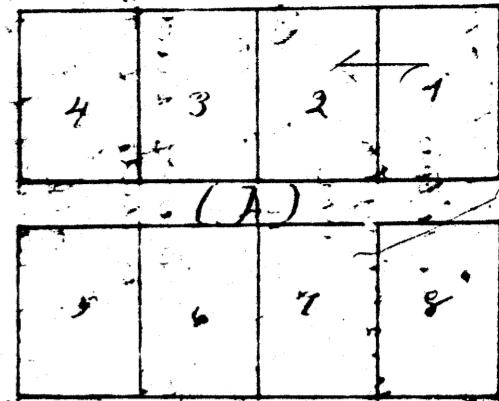
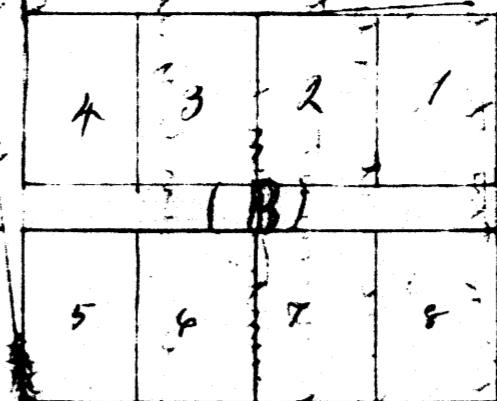
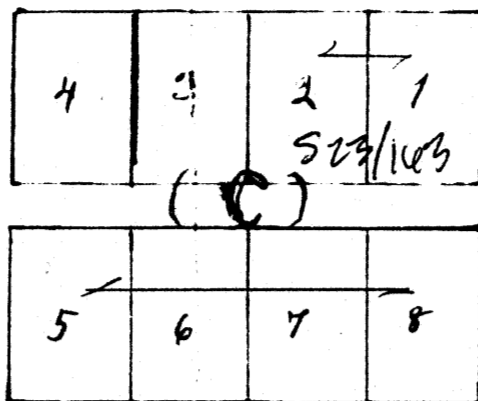
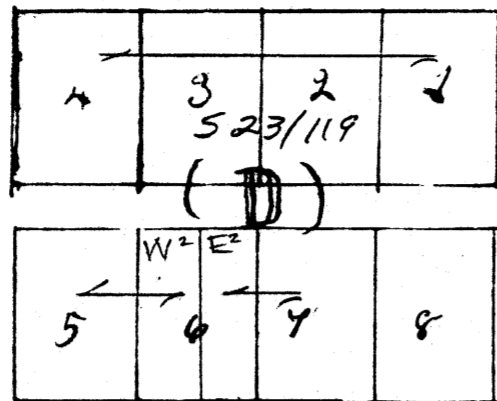
3201951 1"=100'

Beginning at the North East corner of lot No 1 in Block No 4, in Frances Shelton's addition to Sheltonville, measured 60 feet North 7° 30' East and established the South East corner to Block (A) in David Shelton's 1st addition to the Town of Sheltonville. (The corner is a fir post about 2x3 inches in diameter and about 14 inches long and driven about 12 inches into the ground. Said corner is the initial point to David Shelton's 1st addition to Sheltonville.

lots 60x100 feet

Streets 60 feet wide.

Alleys 20 feet wide.



Frances Shelton's Addition